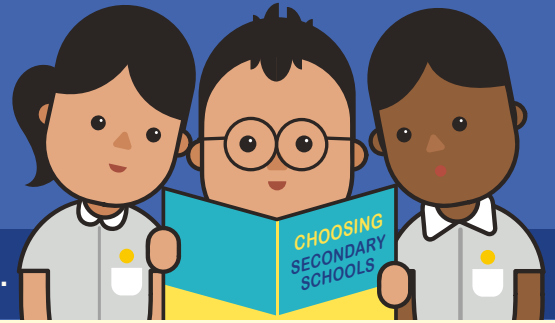


A SECONDARY SCHOOL THAT'S SUITABLE FOR YOUR CHILD



Help them match the school to their strengths and interests.

ASK:

What are their strengths, interests, and abilities?

- What kind of courses, programmes and opportunities will develop these?
- Will the pace of learning be suitable for them?



CONSIDER:

- **School Culture**
- **Courses**
- **Programmes, Subjects and CCAs Offered**
- **Location and Transport**
- **If your child has Special Educational Needs**

Select schools with specialised facilities or resources.



SUBMIT:

- **6 School Options**
So that your child is more likely to get into a school of choice.
- **Schools with Different Cut-Off Points**
Consider at least 2-3 schools where your child's PSLE Score is better than the school's Cut-Off Point.

REFER TO:



MOE's SchoolFinder

Check out schools based on subjects offered, Co-Curricular Activities, location and contact information.

YOUR RANKING OF SCHOOL CHOICES MATTERS.

The higher you rank your preferred school in your choice order, the better your child's chance of being posted there if there is a tie-breaker.

Do note that schools' PSLE Score ranges can vary from year to year, since they depend on each cohort's performance and choice patterns.

